

Current status of ITS in Korea

2017.6

Contents

- **Prologue**
- **ICS: Integrated Control System**
- **SMART Highway & Cooperative ITS**
- **C-ARS: Cooperative Automated driving Roadway Systems**
- **e-Call System**
- **Epilogue**

Chronology of ITS



1991~1998

**ITS Pilot Project
&
Nat'l Promotion
Establishment Plan**

- Development of Advanced Traffic Signal System
- FTMS Pilot Project
- ITS Pilot Project, Gwachon City
- 1st National ITS Master Plan
- 5th ITS World Congress in Seoul

1999~2003

**Enact ITS
Legislation**

- Transportation System Efficiency Act
- 2nd National ITS Master Plan
- Model Deployment of ITS Projects in 3 Cities
- ETCS Pilot Project

2004~2008

**Spread &
Growth
of ITS**

- ITS Operation on Expressway & National Highway
- BIS Operation in Metropolitan & Local Government
- Operation of ETCS

2009~2014

**Next
Generation
New ITS**

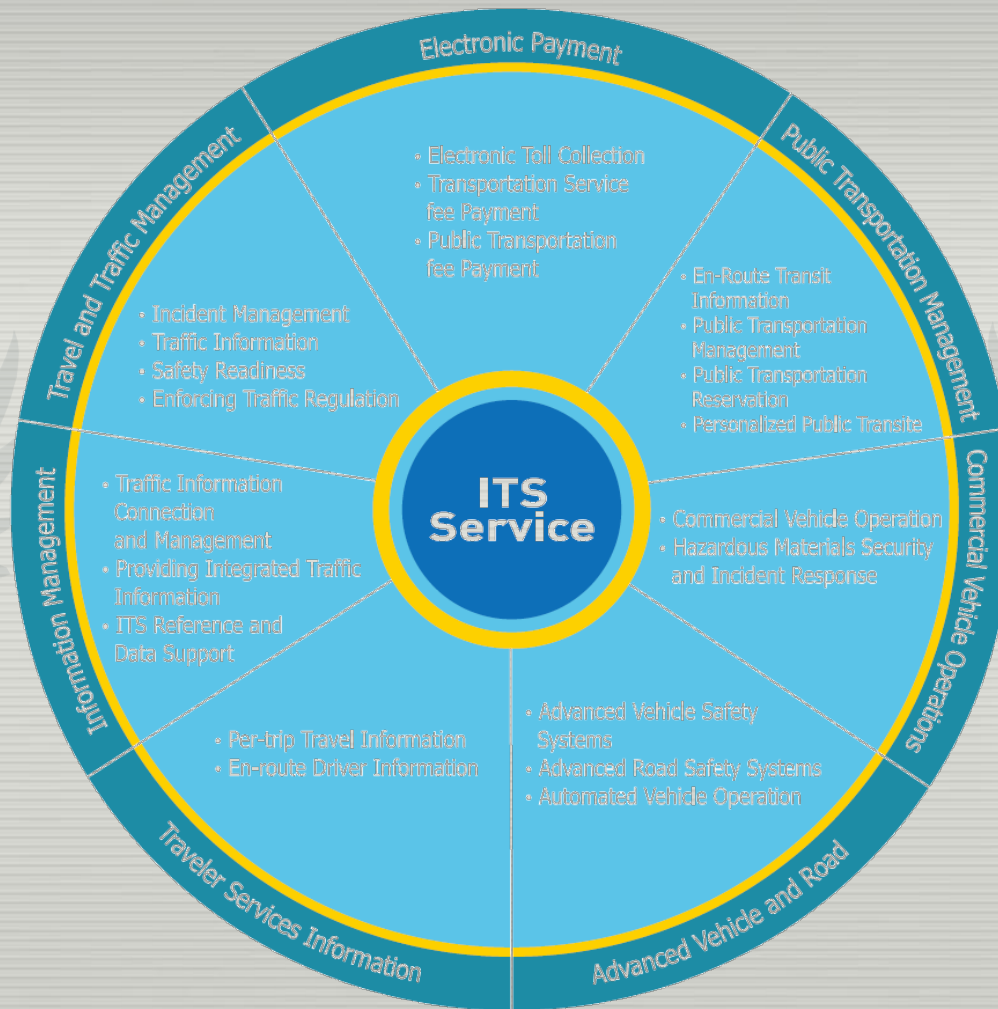
- 3rd National ITS Master Plan
- 17th ITS World Congress in Busan
- Smart Highway R&D Project Completion
- C-ITS Roadmap

2015~

**Deployment of
C-ITS**

- ITS for Pyeongchang Winter Olympics
- C-ITS Pilot Project
- Cooperative Automated Roadway System R&D

ITS Service Area



Need for New Paradigm



- ◆ Safety, Mobility, Convenience, Sustainability
- ◆ Improving Road Safety by V2V, V2I, and Vehicle and Person Communication
- ◆ New Paradigm for Intelligent Transport Systems



Contents

- Prologue
- **ICS: Integrated Control System**
- SMART Highway & Cooperative ITS
- **C-ARS: Cooperative Automated driving Roadway Systems**
- e-Call System
- Epilogue

Illegal Parking Enforcements System

AVI

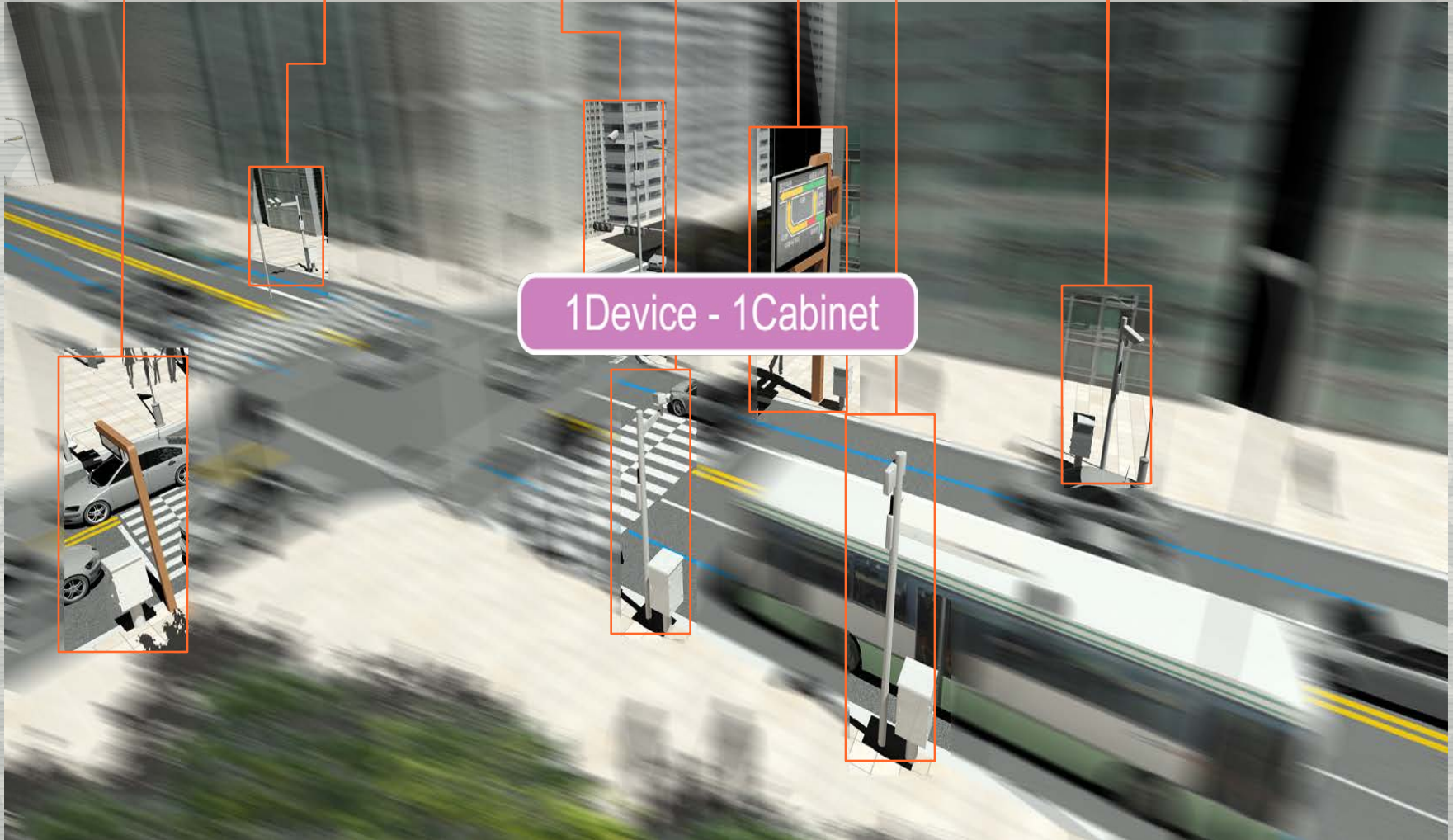
CCTV

VDS

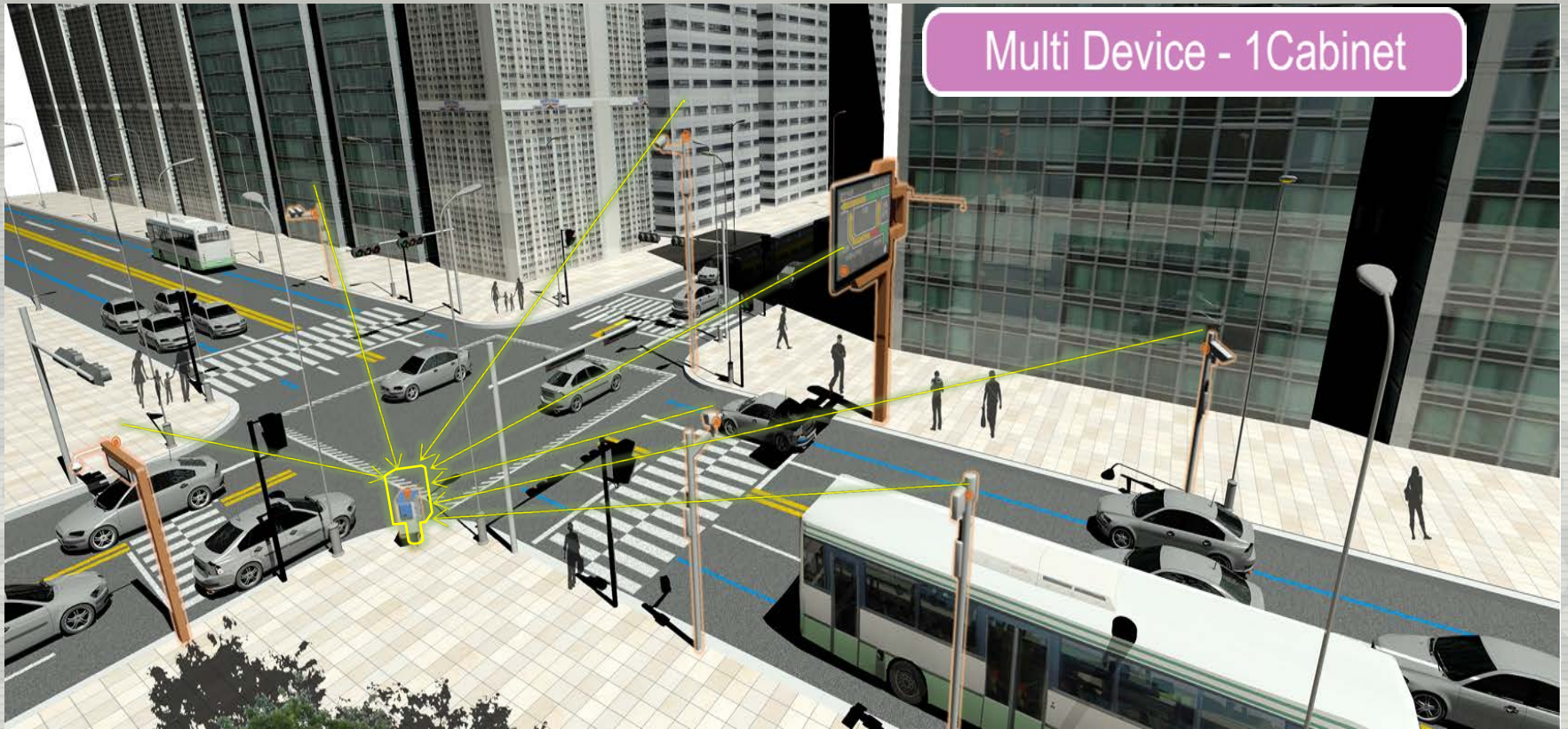
VMS

DSRC

Bus-only Lane Violation Enforcement System



➤ What is the ICS(Integrated Control System)?



➤ Type of ICS



Basic-type



Slim-type



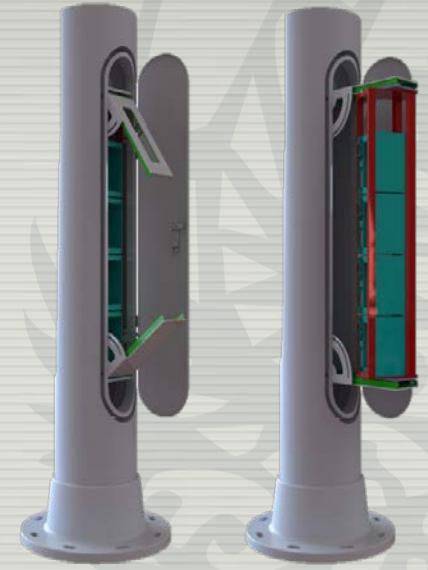
Smart-type
(Ultra-small)



All-in-one device



Smart-type
(LCD)

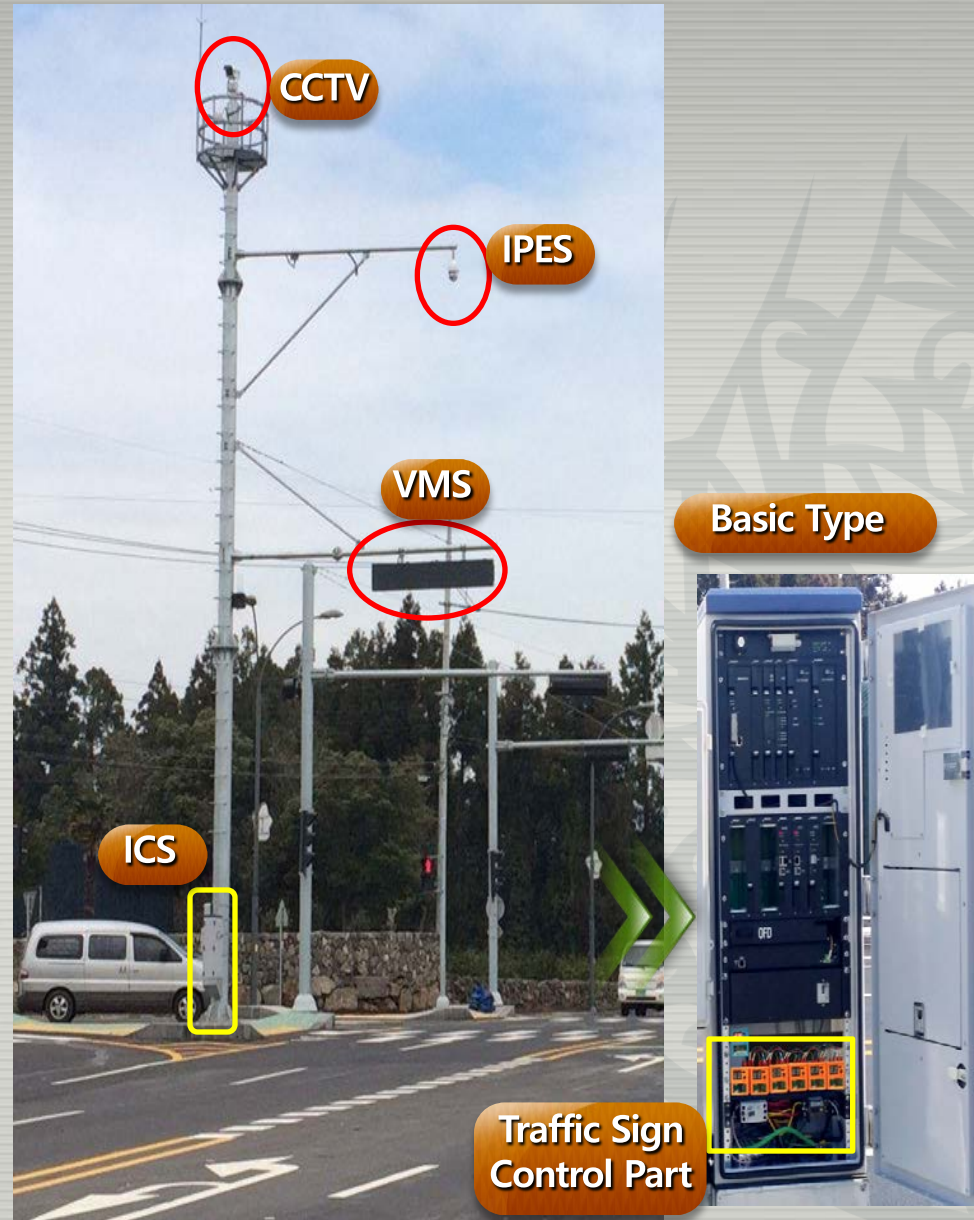
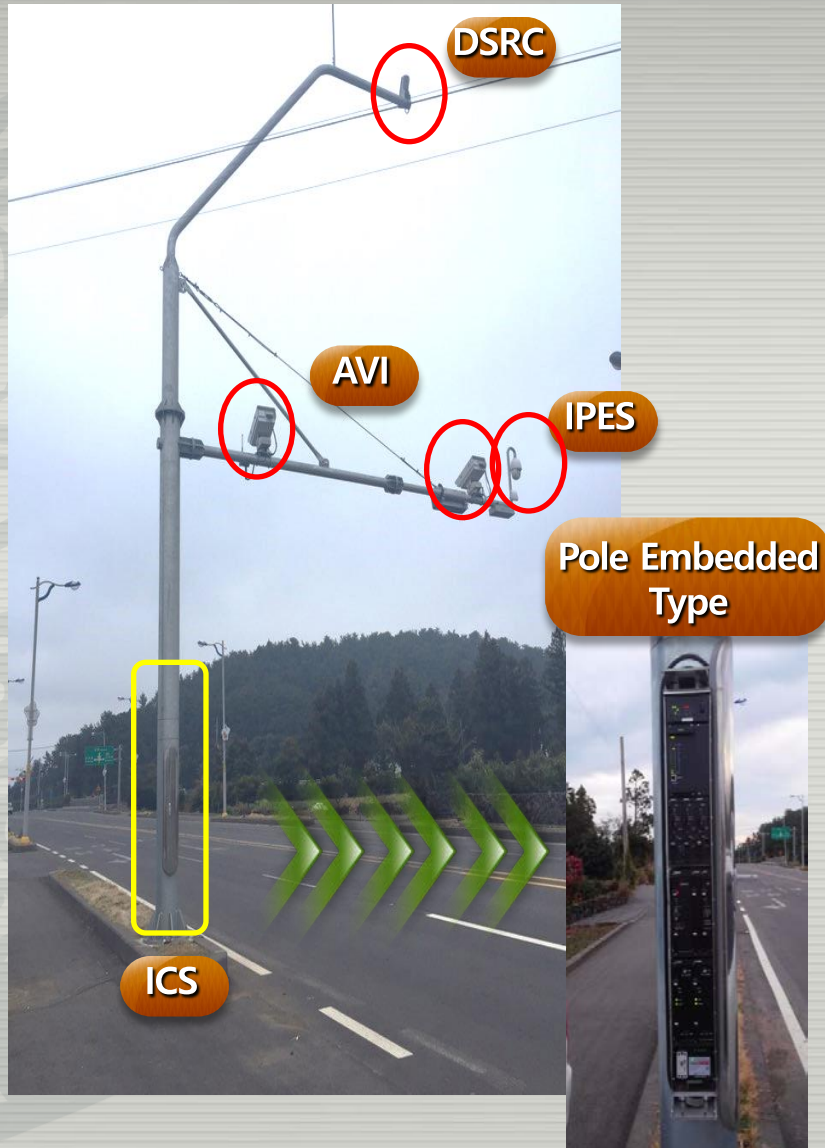


Pole embedded type

Test-bed



Test-bed



Contents

- Prologue
- ICS: Integrated Control System
- **SMART Highway & Cooperative ITS**
- C-ARS: Cooperative Automated driving Roadway Systems
- e-Call System
- Epilogue

S: Safe & Sustainable

M: Mobile

A: Advanced

R: Reliable

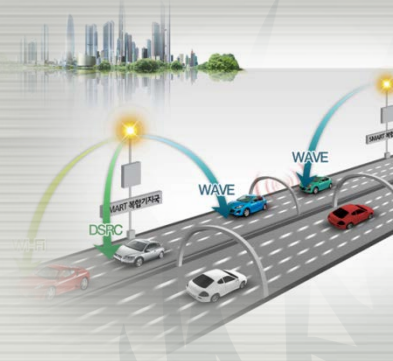
T: Tomorrow



WAVE Communication System

Complex Base Station

- WAVE, DSRC



Auto Detecting System

- By using Array camera & Radar sensor



Panorama Image Using Array Camera



Multi-Lane Based SMART Tolling Service

- By using the active DSRC





Disseminating information on emergencies,
Preventing getting out of driving course

Real-time detection of road conditions
(road surface, falling object, etc.)

Multi Lane Tolling & Any Media Tolling

Single-Lane Tolling(Hi-Pass) → Multi-Lane Tolling

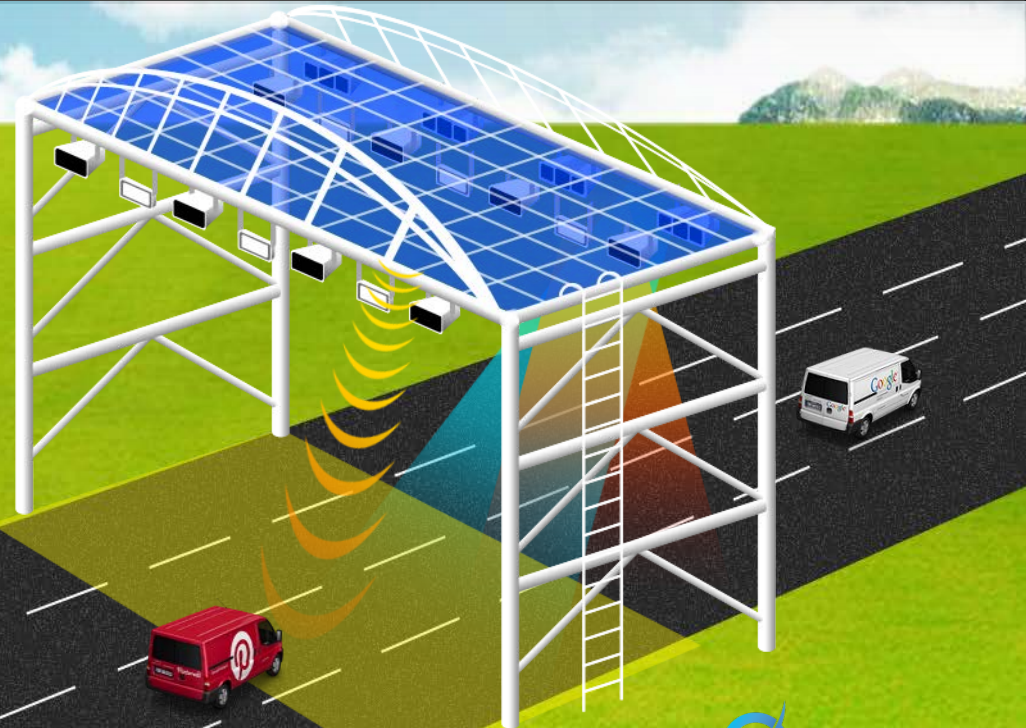
- DSRC communication device
- Hi-Pass current devices available (9.6 million in use)

Any Media Tolling

- WAVE(IEEE 802.11p + 1609.x) communication device
- Smart phone tolling (Application)



WAVE Tolling terminal Smart phone tolling App.



V2X Communication Platform – RSE & OBE

Multi-Purpose Base Station(RSE)

- Various wireless communication
- WAVE, DSRC, Wi-Fi

WAVE communication Device(OBE)

- Safety application & Tolling application



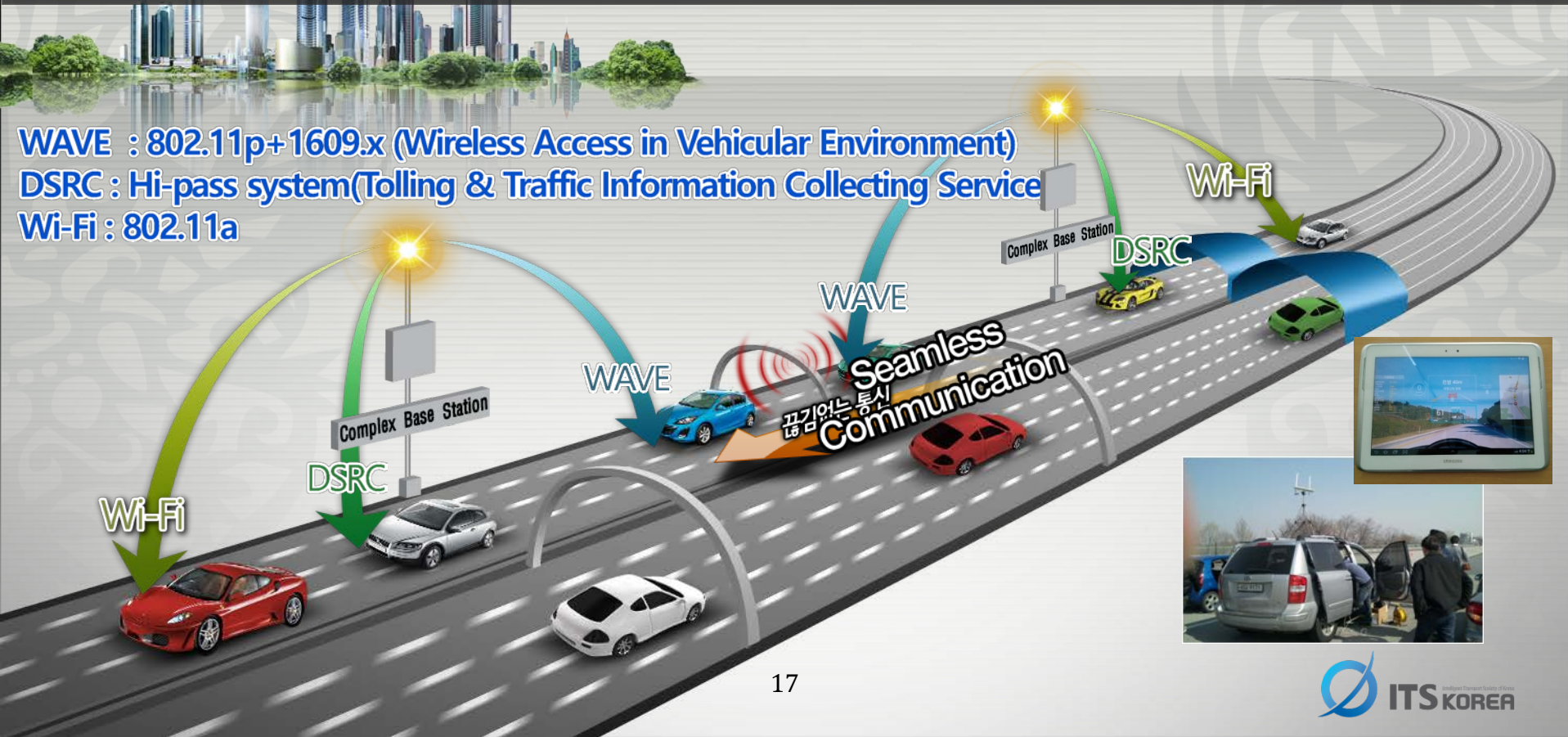
WAVE device



WAVE module



Complex base station

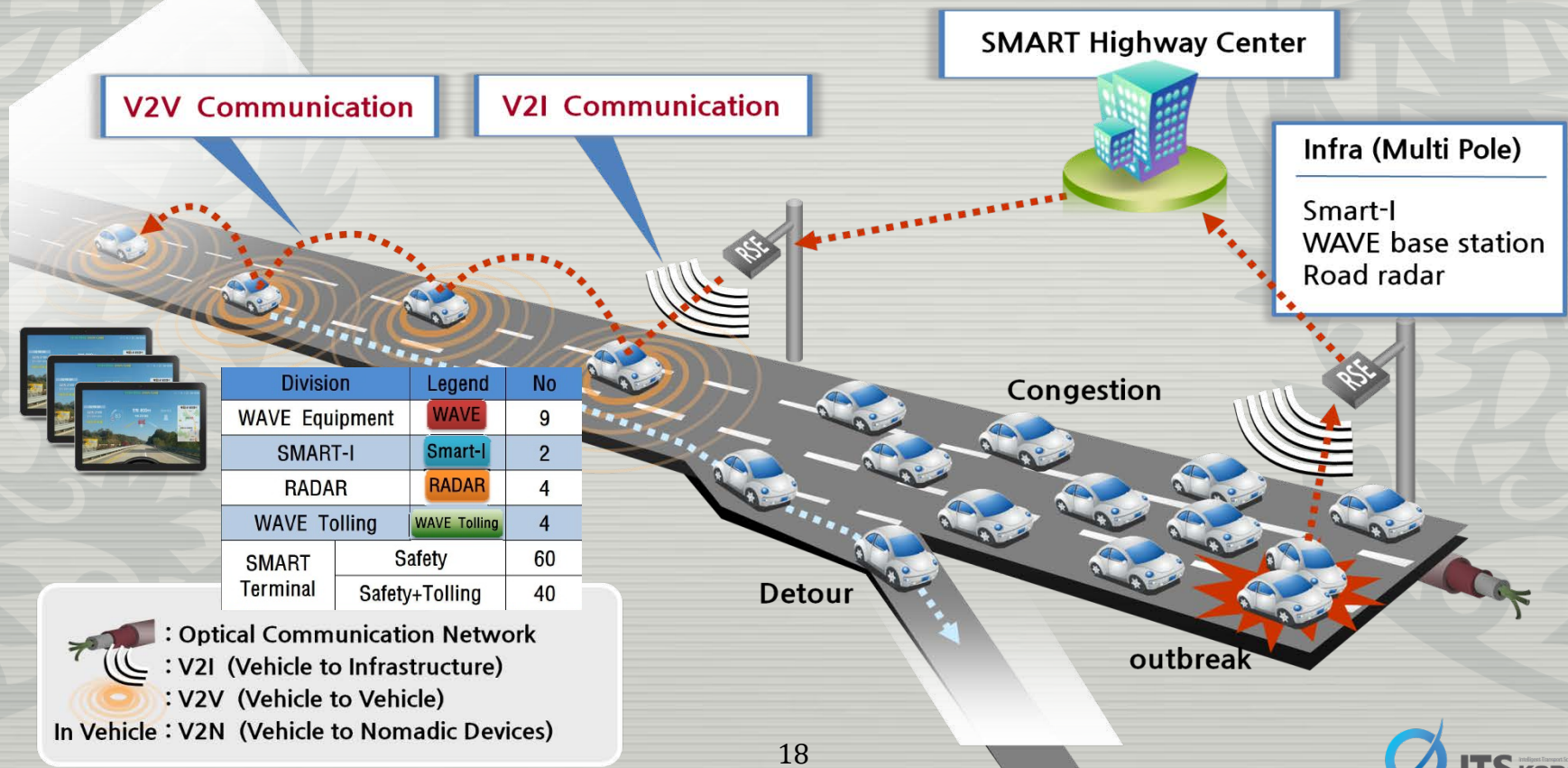


WAVE : 802.11p+1609.x (Wireless Access in Vehicular Environment)
DSRC : Hi-pass system(Tolling & Traffic Information Collecting Service)
Wi-Fi : 802.11a

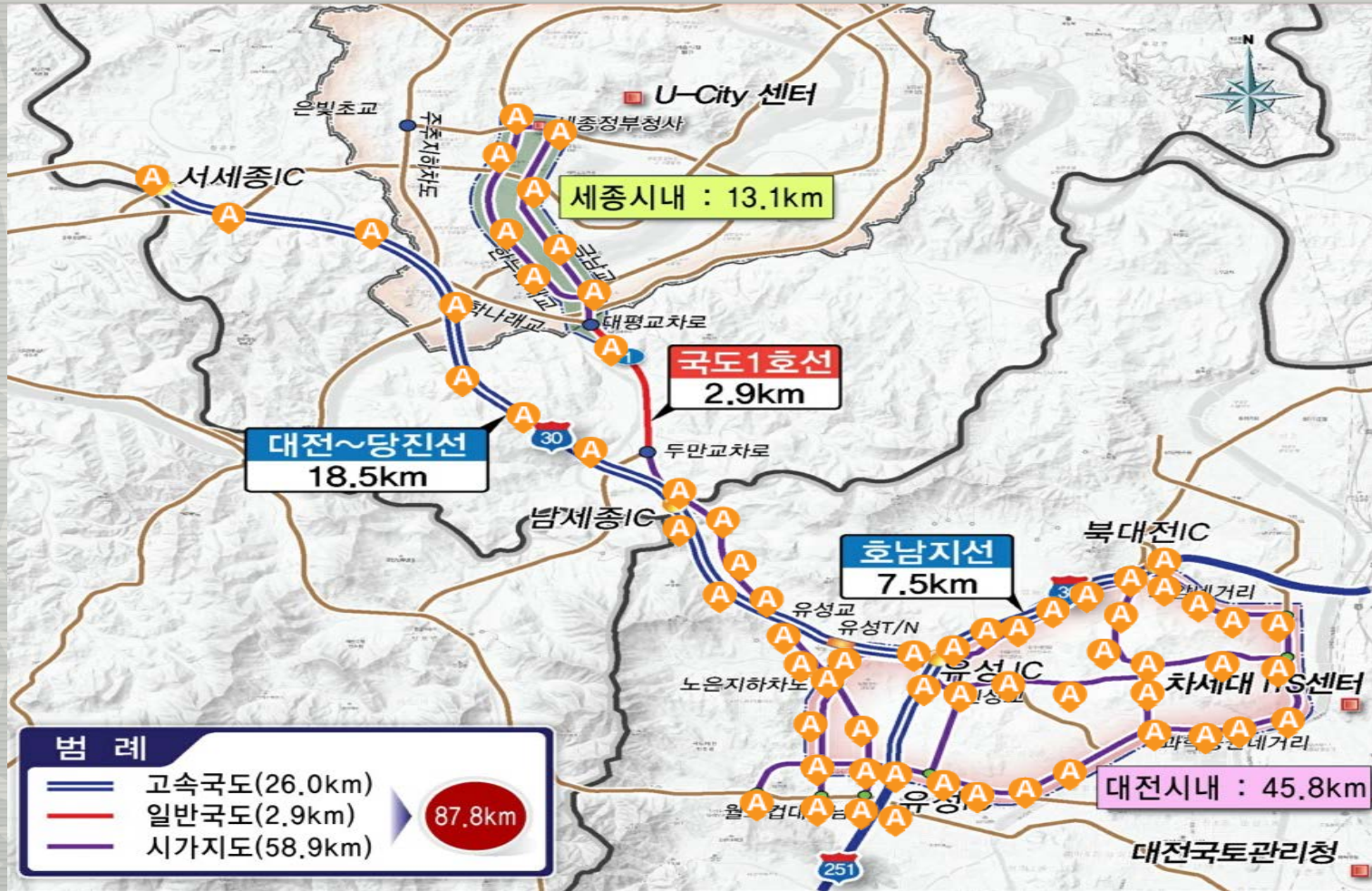
SMART Highway Field of Test: Kyung-Bu Expressway

Construction of SMART Highway Test bed

- Need to verify technology on real traffic circumstance
- Promotion of developed technology for commercialization
- Provide advertising site for **SEOUL World Road Congress** in 2015
- Section : Kyung-Bu Expressway (Seoul TG ~ Suwon IC, 11km)



Cooperative ITS Pilot Project Site



Expected Benefits of Cooperative ITS

Accidents



181,391

2011

Reduced by
46%

97,425

2030

Speed



20km/h

2011

Increased by
30% (Urban)

26km/h

2030

Social Cost



USD 12.7 B

2011

Reduced by
28%

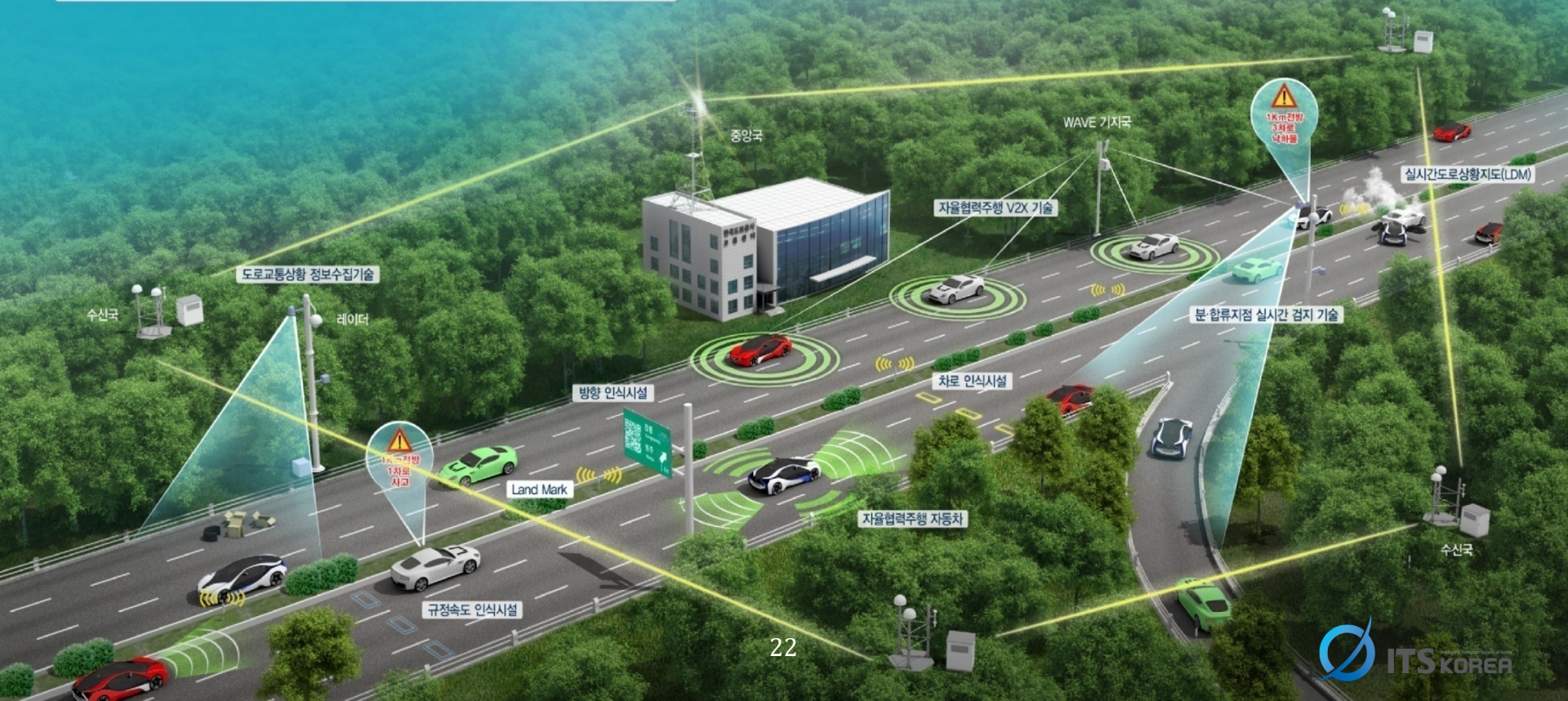
USD 9.1 B

2030

Contents

- Prologue
- ICS: Integrated Control System
- SMART Highway & Cooperative ITS
- **C-ARS: Cooperative Automated driving Roadway Systems**
- e-Call System
- Epilogue

C-ARS(Cooperative Automated driving Roadway System) in Korea



C-ARS (Cooperative Automated driving Roadway Systems) R&D Project

Task 1: Precision electronic map based LDM

Task 2: Hybrid V2X communication system

Task 3: Prototype vehicle

- road facility, complex positioning, and cooperative control evaluation

Task 4: Automated driving vehicles for demonstration and verification process

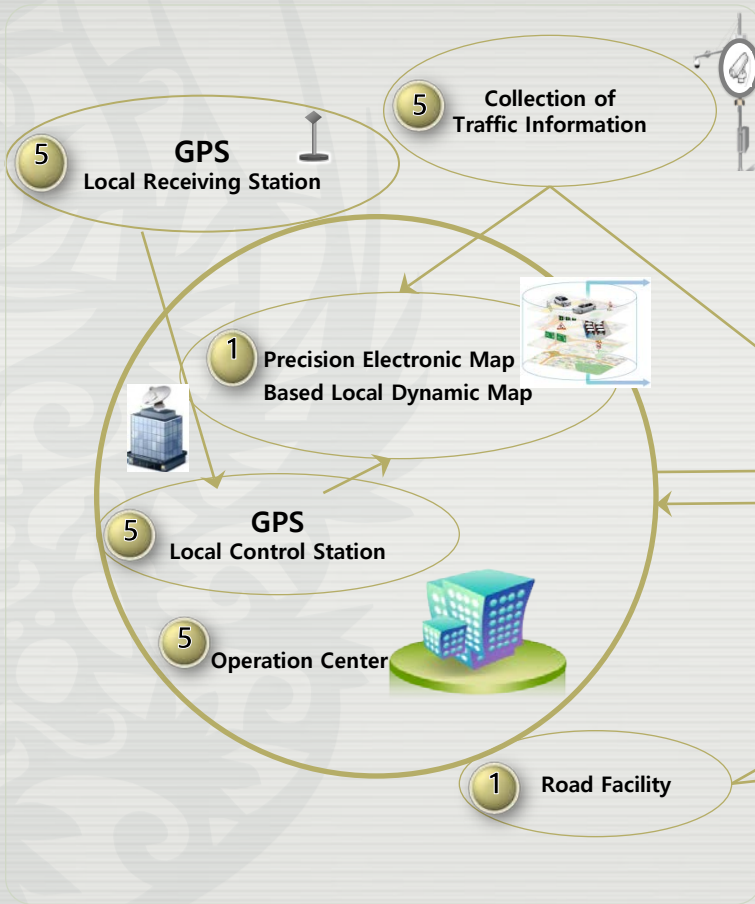
Task 5: Test-bed for smart road system for automated driving

C-ARS: Cooperative Automated driving Roadway Systems

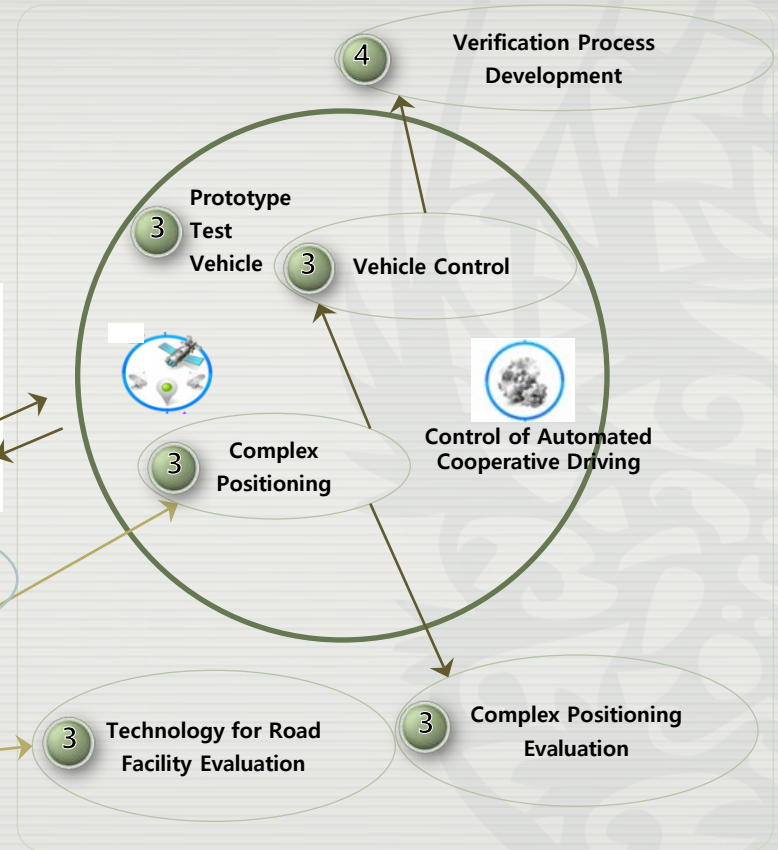


Autonomous Vehicle

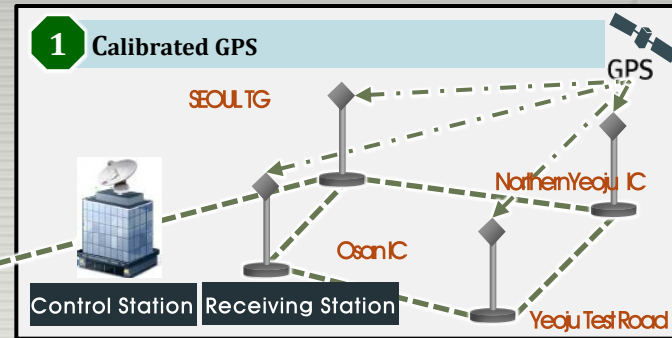
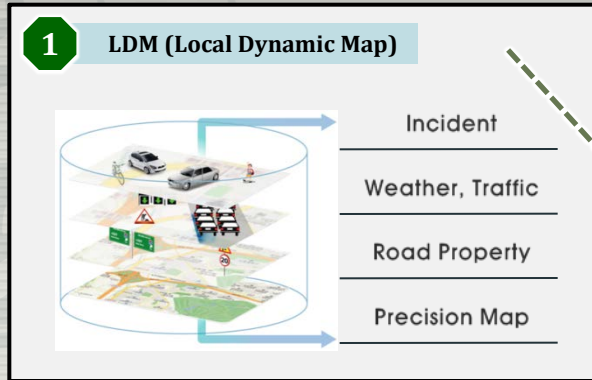
Road Infrastructure (Task 1 & 5)



Automated Cooperative Driving (Task 3 & 4)

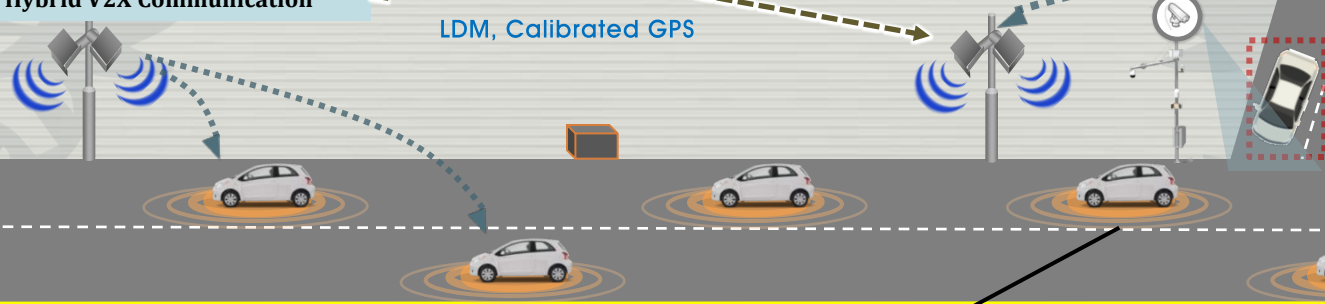


C-ARS: Cooperative Automated driving Roadway Systems



Information on Approaching Vehicles at JC

2 Hybrid V2X Communication



3 4 Autonomous Cooperative Driving Vehicle

- Complex Positioning with High Precision
 - LDM
 - Vehicle Sensor
-
- Control of Automated Vehicle

Test-Bed for Cooperative Automated driving Roadway Systems



Contents

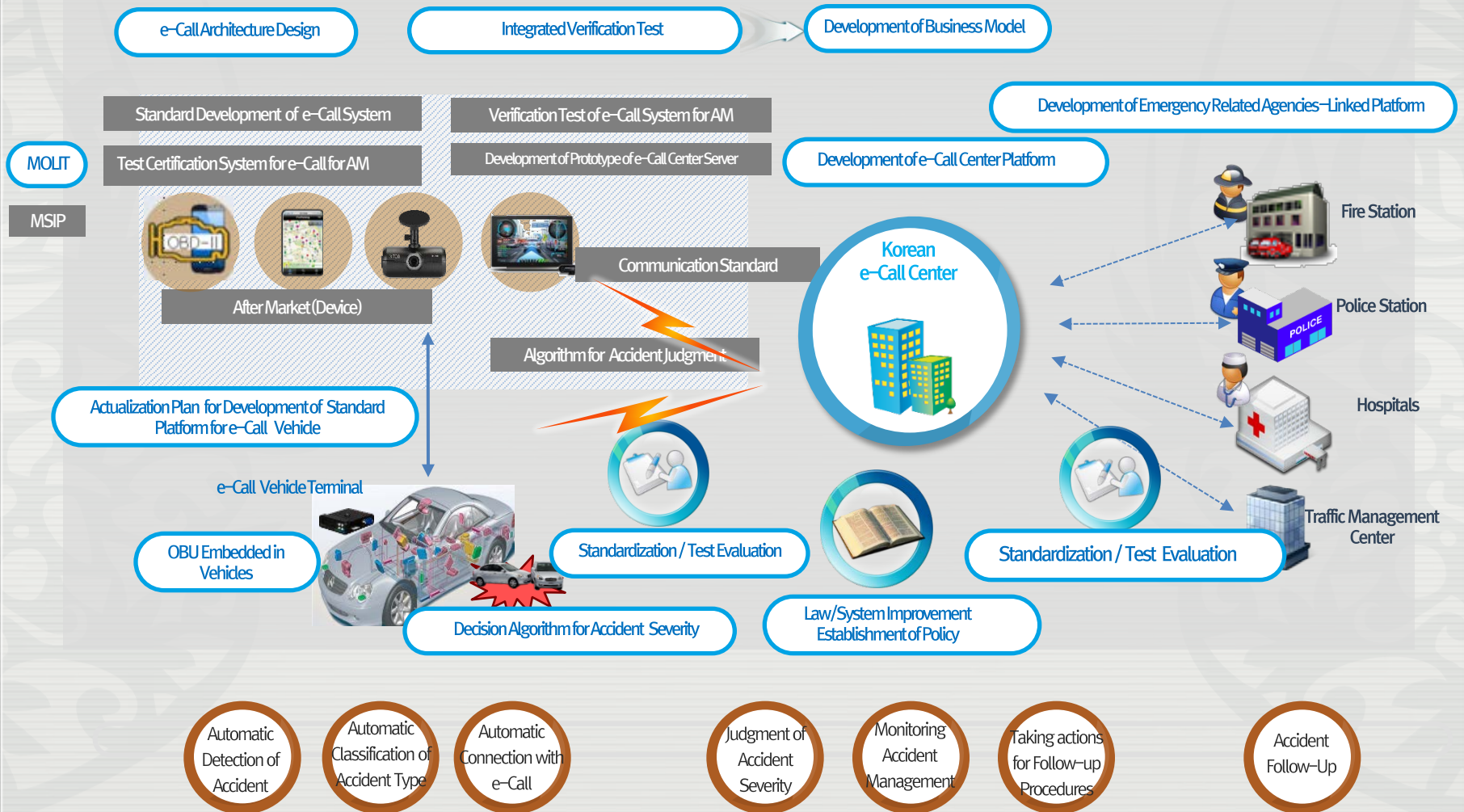
- Prologue
- ICS: Integrated Control System
- SMART Highway & Cooperative ITS
- C-ARS: Cooperative Automated driving Roadway Systems
- e-Call System
- Epilogue

e-Call System Overview

- Emergency Rescue System (e-Call) based on Vehicle ICT
- Implementing Agency: ITS Korea
- Developing
 - Operation Model for e-Call Center & Center Platform
 - Service Manual and Algorithm for e-Call
 - Standards, Certification, and Evaluation for e-Call
 - Laws, Regulations, & Business Model for Rapid Stabilization
- Period: 2016.04 ~ 2019.06
- Budget: US\$10.8M

e-Call System

Role of Each Participating Agency



Contents

- Prologue
- ICS: Integrated Control System
- SMART Highway & Cooperative ITS
- C-ARS: Cooperative Automated driving Roadway Systems
- e-Call System
- Epilogue

Current Status of Export

- ◆ Korea ITS exported to 39 countries since 2006
- ◆ As of May. 2017, a total of about 102 projects have been conducted including ETCS (Electronic Fare Collection), ATE (Automatic Traffic Enforcement), AFC (Automatic Fare Collection), ATMS (Advanced Traffic Management System) and PIS (Parking Information System), WIM(Weigh In Motion)



International Cooperation

Support for ITS Services and Key Technologies

- Consulting for ITS key technologies and the best services to each country
- Assisting briefing session for each country
- Sharing know-how and solution of Korea's ITS

Reinforcement of Cooperation between Government & Private company

- Assisting high-level and working-level meetings to secure regular ITS cooperation channel
- Supporting for training professionals through ITS-related research and education programs
- Providing financial supports such as EDCF, etc.



Best Partner for Your Better Transport Systems



Best Place for 2022 ITS World Congress

SEOUL

I·SEOUL·U

너와 나의 서울

Address

2F, #31 Seongho-ro, Sangrok-gu, Ansan-si, Gyeonggi-do
Korea, 426-150

E-mail & Tel.

- hspark@itskorea.kr
- +82-31-478-0411

Home page

-<http://www.itskorea.kr/>

Thank you !!

